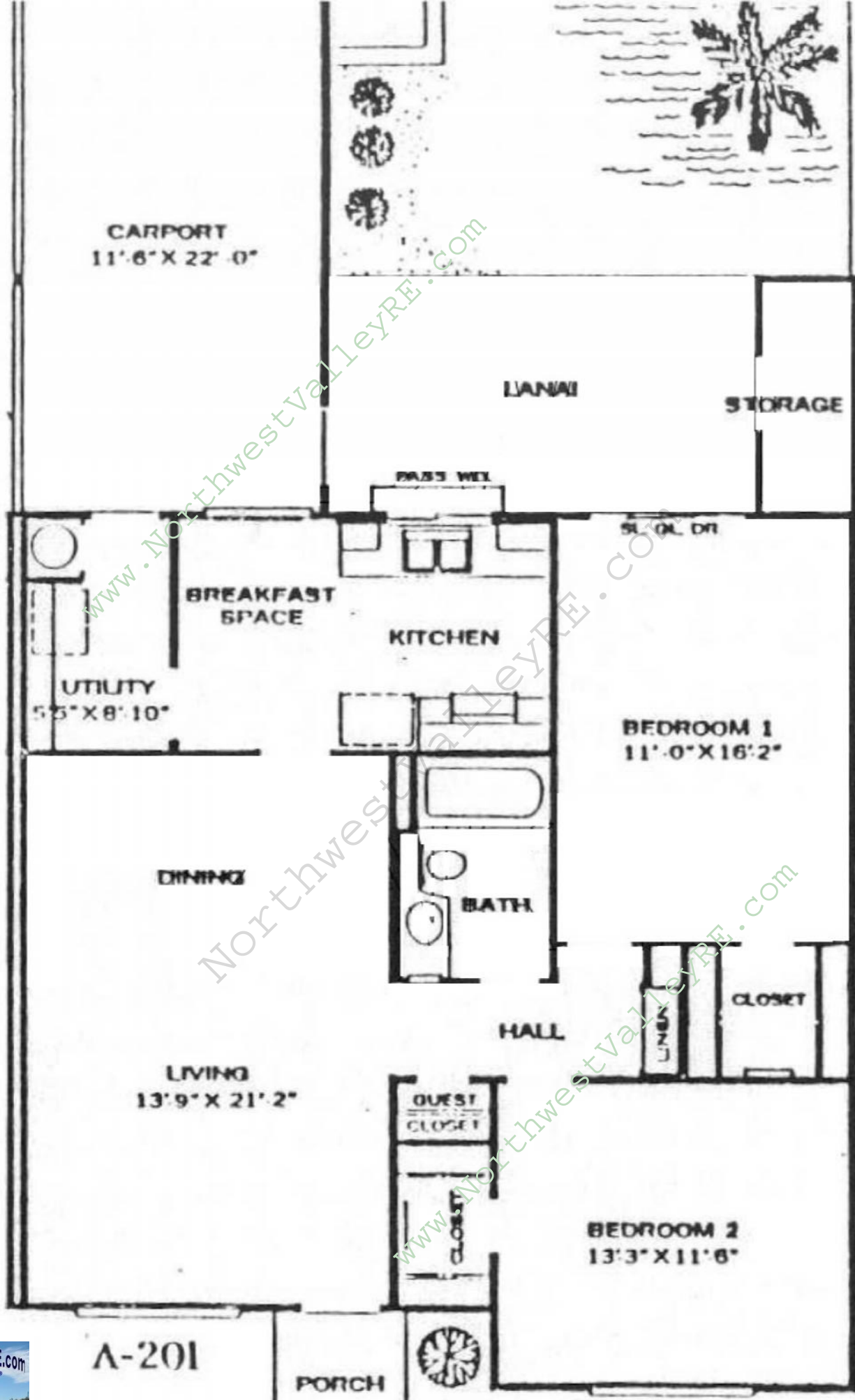


www.NorthwestValleyRE.com
 Brad Zimelman, Realtor®
 Associate Broker
 602-618-7577
Because you deserve the very best!





CARPORT
11'-6" X 22'-0"

LANAI

STORAGE

PASS WEL

SL. GL. DR

BREAKFAST
SPACE

KITCHEN

UTILITY
5'-5" X 8'-10"

BEDROOM 1
11'-0" X 16'-2"

DINING

BATH

CLOSET

HALL

LIVING
13'-9" X 21'-2"

GUEST
CLOSET

BEDROOM 2
13'-3" X 11'-6"

CLOSET

A-201

PORCH

www.NorthwestValleyRE.com
Brad Zimelman, Realtor®
Associate Broker
602-618-7577

Because you deserve the very best!