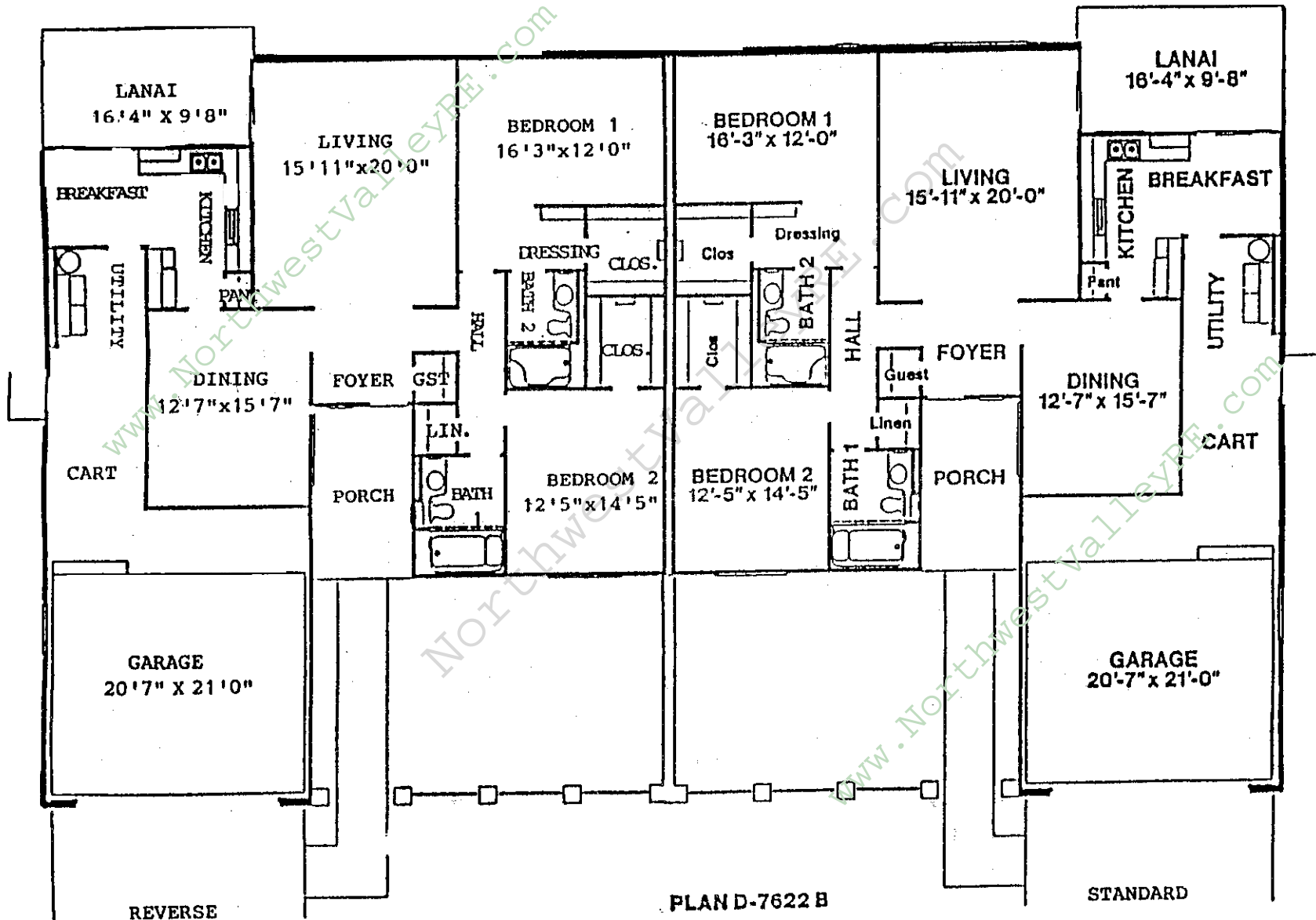


www.NorthwestValleyRE.com
 Brad Zimbelman, Realtor®
 Associate Broker
 602-618-7577

Because you deserve the very best!



REVERSE

PLAN D-7622 B

STANDARD

1591 SQ. FT.
 PHOENIX CITY, ARIZONA

Shown in normal construction perspective. The room sizes shown may vary slightly.